

# Navihood

## A3

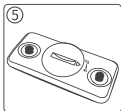
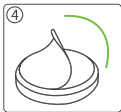
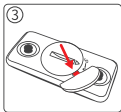
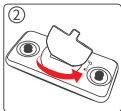
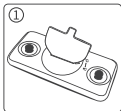
### Heart Rate Monitor

#### Quick User Guide



## Remove the battery insulation film/ Replace the battery.

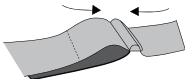
- ① Use the opening flake that comes with the package to insert the battery cover.
- ② Rotate the battery cover to the unlocking position.
- ③ Use the other side of the unlocking film to pull out the battery cover and remove it.
- ④ Remove the battery insulation film.
- ⑤ Reinstall the battery cover.





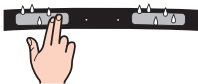
Note: If you are replacing a new battery, the positive side of the battery should face the battery cover.

## Installation Instructions

1. Adjust the tightness of the strap according to your body's bust. It is tight after being worn on the skin to ensure that it can be worn during exercise with reliable touch but not uncomfortable on the body. This shall prevail.



3. This sensor supports two wireless modes: Bluetooth  (NAVI-CAD) and ANT+ (  123456).
4. When the sensor cannot be found, the connection is unstable, or the LED continues to jitter or become dark. Please replace the battery, specifications: CR2032, DC 3V
5. If there is a strong magnetic field or a high-power transmitter with a frequency of 2.4G nearby, the device data may be temporarily affected.
6. If it is a dry winter, the skin and strap may not be effectively connected at the beginning of riding, and the data may be abnormal. Try applying some water to the electrodes on both sides to increase its conductivity. This is very effective.



7. Please wait until the connection is reliable and the data is displayed stably before starting the riding record.
8. The heart rate belt is not suitable for rubbing and washing with chemicals. Please wipe it with clean water.
9. If you are equipped with a cardiac pacemaker or other body electronic devices, please use them under the advice of a doctor.
10. Operating ambient temperature:  $-20$ – $+60^{\circ}\text{C}$ , waterproof grade IPX6

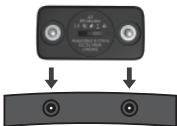
## Help and After-sales Service

This computer is under warranty for two years from the date of purchase, excluding damage caused by human factors.

If you encounter any difficulties during use, you can find us through the following channels:

- Troubleshooting guides in various functional sections of the APP. For example, [how to import from a computer to the device?](#)

2. Snap the heart rate transmitter into the strap.



3. Place the heart rate belt on your chest and atrium, with the transmitter in the center, and buckle the belt.

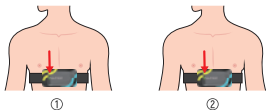


4. If there is a lot of body hair on your chest, please try to change it to another suitable position.

5. If it does not fit tightly enough with the skin, data abnormalities may occur during strenuous exercise.

## Usage Instructions


1. Wear the heart rate belt on your body and activate the sensor.



① LED flashing: waiting for connection.

② LED always on: connected. It will turn off after 10 seconds.

1. Wear the heart rate belt on your body and activate the sensor.

2. You can directly connect the sensor for use in the Workout-Settings of  APP. You can connect the sensor to supported computers (NAVIHOOD,GARMIN,WAHOO etc.), watches(GARMIN, SUNNTO,POLAR etc.), and other APPs(ZWIFT etc.).

- ▶ "More → Help Center" in the APP or "Contact Us" on the official website
- ▶ After-sales email: [service@meilankj.com](mailto:service@meilankj.com)
- ▶ Phone: +86 0755 23159119
- ▶ Working hours: Monday to Saturday, 09:00-17:00 China time



Facebook



YouTube



APP

# Navihood

---

Manufacturer: Shenzhen Meilan Technology Co., Ltd.

Address: 5/F, B16 Building, Hengfeng Industrial City,  
Ba'an District, Shenzhen, China

Tel: +86-0755-23159119

Website: [www.meilancycling.com](http://www.meilancycling.com)